

PINES OF WESTLAKE - PHASE I

BEING A PORTION OF SECTION 5, TOWNSHIP 43 SOUTH, RANGE 41 EAST,
CITY OF WESTLAKE, PALM BEACH COUNTY, FLORIDA.

P.O.B. ----- POINT OF BEGINNING
 P.O.C. ----- POINT OF COMMENCEMENT
 P.B. ----- PLAT BOOK
 D.B. ----- DEED BOOK
 O.R./O.R.B. ----- OFFICIAL RECORDS BOOK
 PG./PG(s) ----- PAGE(s)

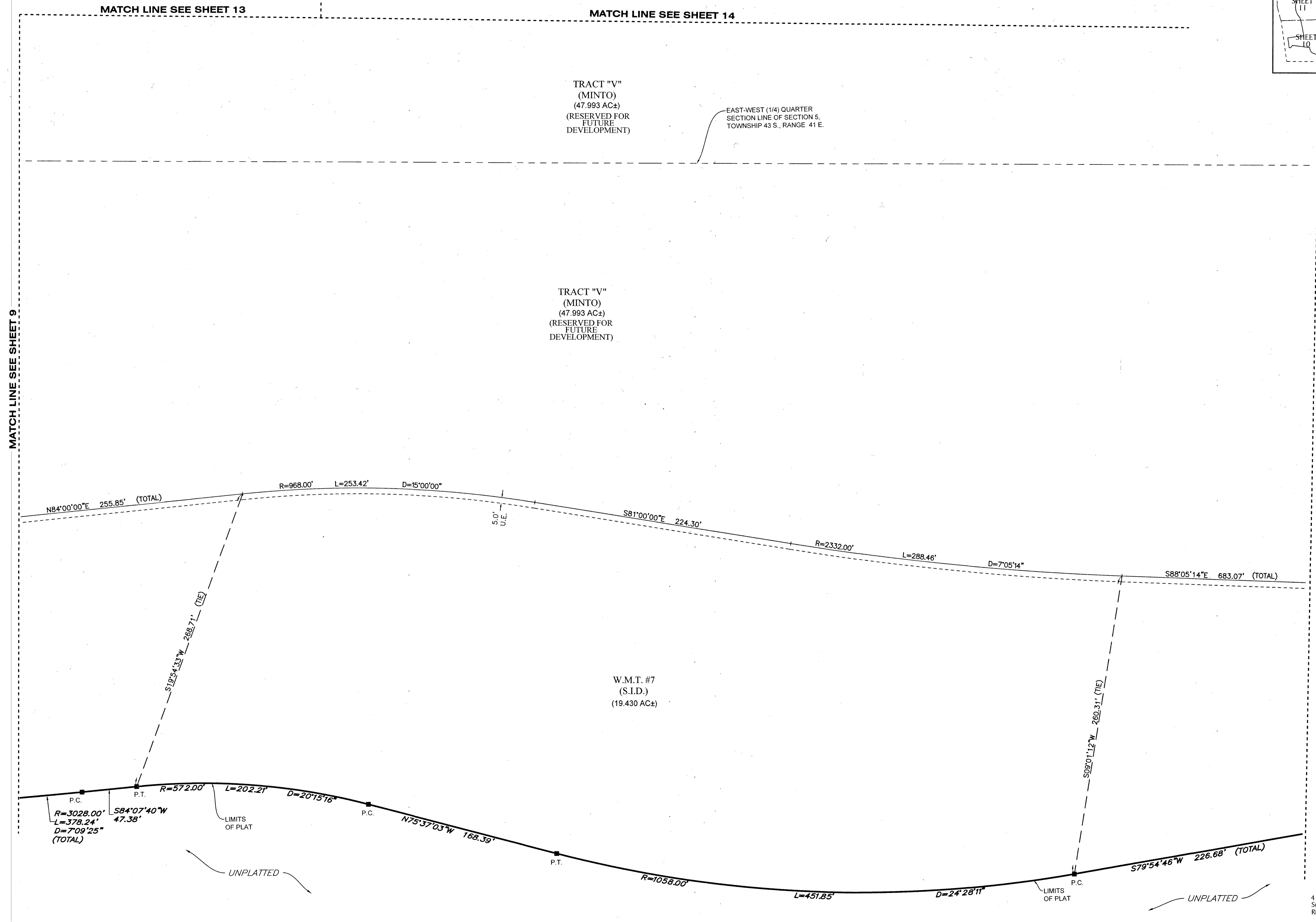
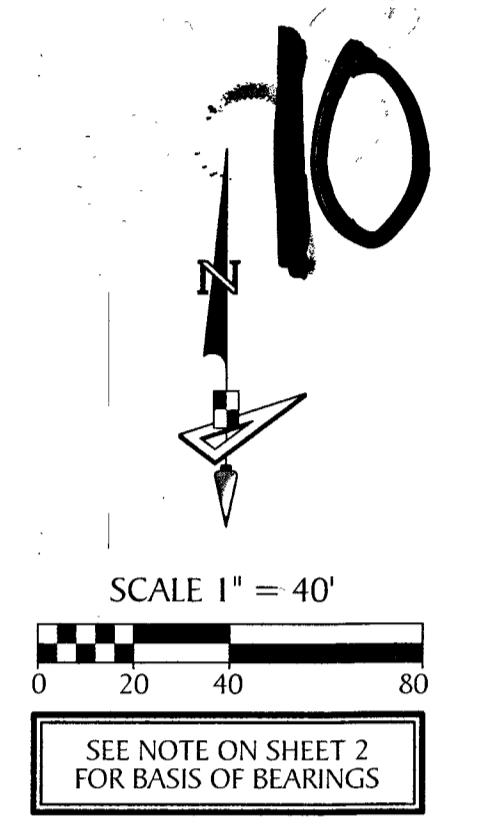
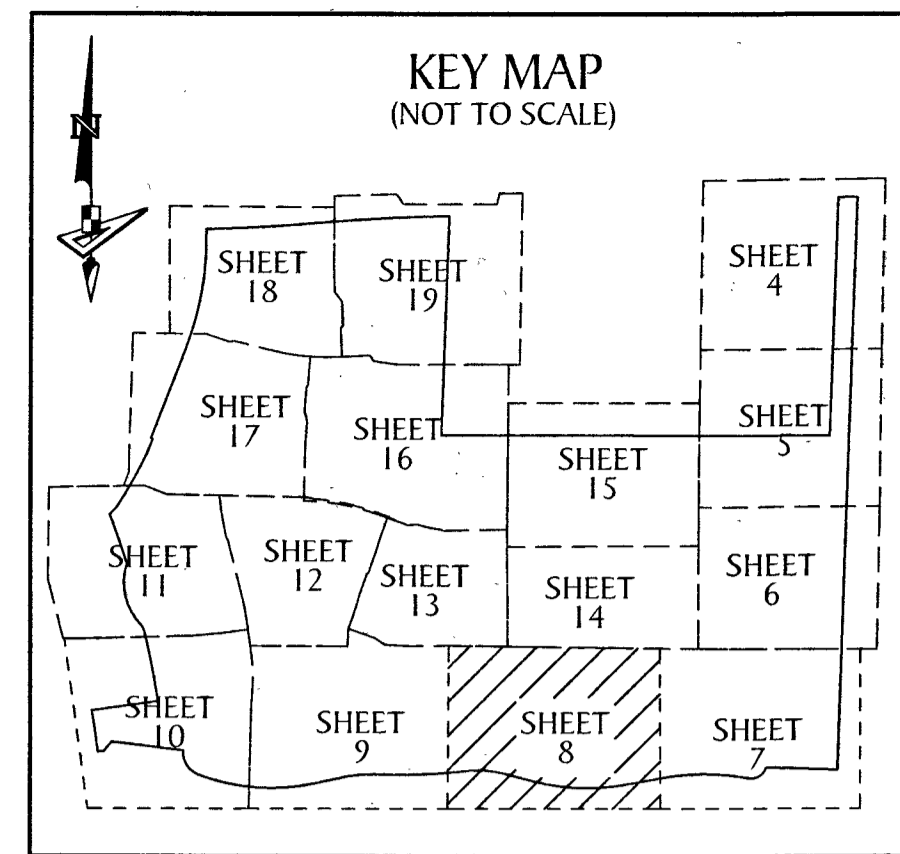
NAD ----- NORTH AMERICAN DATUM
 W.M.T. ----- WATER MANAGEMENT TRACT
 O.S.T. ----- OPEN SPACE TRACT
 P.B.C. ----- PALM BEACH COUNTY
 U.E. ----- UTILITY EASEMENT
 D.E. ----- DRAINAGE EASEMENT

L.M.A.E. ----- LAKE MAINTENANCE ACCESS EASEMENT
 5-43-41 ----- SECTION-TOWNSHIP-RANGE
 R ----- RADIUS
 L ----- ARC LENGTH
 D ----- DELTA ANGLE
 CB ----- CHORD BEARING

LEGEND

C ----- CHORD
 N.T. ----- NON-TANGENT
 N.T.C. ----- NON-TANGENT CURVATURE
 P.C. ----- POINT OF CURVATURE
 P.T. ----- POINT OF TANGENCY
 C.C. ----- COMPOUND CURVATURE
 R.C. ----- REVERSE CURVATURE
 R.I. ----- RADIAL INTERSECTION
 R/W ----- RIGHT-OF-WAY
 (R) ----- RADIAL
 (NR) ----- NON-RADIAL
 HOA ----- HOMEOWNERS ASSOCIATION
 S.I.D. ----- SEMINOLE IMPROVEMENT DISTRICT
 PRM ----- PERMANENT REFERENCE MONUMENT

● ----- PERMANENT CONTROL POINT
 □ ----- FOUND PERMANENT REFERENCE MONUMENT
 ■ ----- SET 4"x4" CONCRETE MONUMENT WITH 2" ALUMINUM DISK STAMPED "PRM LB 7768"



GeoPoint
Surveying, Inc.

4152 W. Blue Heron Blvd. Phone: (561) 444-2720
 Suite 105 www.geopointsurvey.com
 Riviera Beach, FL 33404 Licensed Business Number LB 7768

SHEET 8 OF 19 SHEETS